

Living etc

BRITAIN'S
BEST-SELLING
MODERN HOMES
MAGAZINE
NOW IN INDIA!

INDIA EDITION
MARCH 2010 Rs100
SUBSCRIBER COPY NOT FOR RESALE

Traditional MODERN

*Embracing the
age-old jaalis*

*Cosy up in
gorgeous
bed linen*

- SUPER-CHIC
FAMILY AREAS
- IMPRESSIVE
FOYERS
- TIPLING
BARS

GIVE YOUR HOME
a personal touch



9 770975 062006 >

house of the month

A MODERN INTERPRETATION

Annabelle Manwaring's sprawling home on the outskirts of Bengaluru is an amazing amalgam of modern and traditional architecture

WORDS APURVA BOSE DUTTA
PHOTOGRAPHY NIMISH JAIN
STYLING SHARMISTHA DUTTA



THE COURTYARD

Antique pieces add to the traditional Indian courtyard setting. The abstract freestanding walls create moments of privacy and the paintings add vivacity. Cushions and bolsters are made from Annabelle's saris. 'This orange couch is one of my favourite places in the house. With the pool in front, there is double exhilaration of sitting indoors yet being outdoors,' says Annabelle.

The Mysore traditional bench and the table were bought from the Thar Antique shop in Bengaluru.

Annabelle shopped for the boat ends, tea lantern and peacock heads from Sangolda in Goa. The Rajasthani figurines were picked up from Delhi.





DECK

ABOVE The antique chest sits pretty with a painting looming overhead. During the afternoons the *jaalis* cast an enigmatic shadow on the wall beside it. The chest was bought from Mysore.

LIVING ROOM

RIGHT A vast space flowing out into the dining, the glistening Jaisalmer stone flooring and a minimalist touch are the hallmarks of the drawing room. The living area has three seating areas and the voids and punctures in the wall connect them. The *charpai* is from Sangolda, Goa. The lamp and furniture were picked up from Casa Paradox, Delhi.



COURTYARD

FACING PAGE The drawing room looks out into the courtyard and offers a stunning view of the pool and the temple tree resting under the dramatic steel truss and Mangalore tiles. 'When it rains it makes a lovely sound,' gushes Annabelle. The combination of kota flooring and mint sandstone adds character to the space.

The property

TYPE: A 12, 000 sq ft bungalow in a one acre plot

SPACE: Drawing, dining, kitchen, study, family room, two bedrooms on the ground floor; four bedrooms with attached bath and dresser, a living room, a terrace on the first floor.

LOCATION: Hebbal, Bengaluru.

What Annabelle did

- Chalked down the brief of a traditional cum modern house
- Entrusted Sandeep Khosla with the design of the house
- Bought furniture from India that would suit the vocabulary of her house



The moment you enter the gate and set your feet on this sprawling acreage, you know the hustle bustle of the city has been left behind. Annabelle Manwaring moved here three years back after spending a large chunk of her life in London serving as the Global Creative Director of Leo Burnett. The house was constructed in 2001 by architect Sandeep Khosla (khoslaassociates.com). 'I only saw a model of the house when I was visiting India. The rest was finalised with Sandeep on the Internet. He tells me even today that I am probably his only client who hasn't altered a single

aspect of his design,' says Annabelle.

With three daughters back in UK and the youngest one, Priya who lives with her, the seven bedroom house dwells on the traditional concept of the courtyard as the hub. Annabelle left behind all her furniture in London and prepared to start from scratch in India. She credits Sandeep saying 'he had the interiors planned out to the 't', right down to the placement of furniture. A lot of the furniture was brought in before I moved into the house, our ideas (Sandeep's and mine) just clicked.'



COURTYARD

LEFT Most of the rooms open directly or indirectly into the central courtyard. Bedrooms on the ground floor are accessed by small pebble courts. Rugs and runners sourced from Carpet Cellar in Delhi add to the Indian feel. 'The red chest is the only piece of furniture that I got back from London with me,' says Annabelle.

LIVING AREA

BOTTOM LEFT The staircase has a neat profile allowing artefacts to be displayed at various levels.

BELOW Famil pictures adorn the dining room wall. Annabelle got the cabinet with a granite top custom designed by Khosla Associates and made at Smith Interiors.



THE LIVING ROOM

The living room on the first floor is connected to the other bedrooms via walkways. The foosball table, low height furniture, rug, bamboo candle holders and an old harmonium give a vibrant yet casual look to this lounge. The ceiling has an interesting profile. The piece de resistance though remains the colourful painting. Annabelle remarks, 'Paresh Maity is a personal friend and he wanted to do a painting for this wall. I then got my furniture matched to the painting.'

Annabelle bought the foosball table from a sports store in Koramangala, Bengaluru. The silver-plated brass candle holders are from Sangolda, Goa.

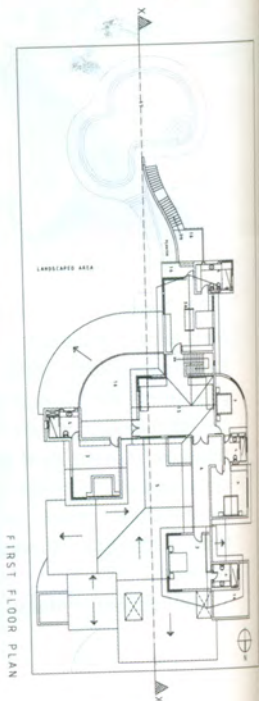
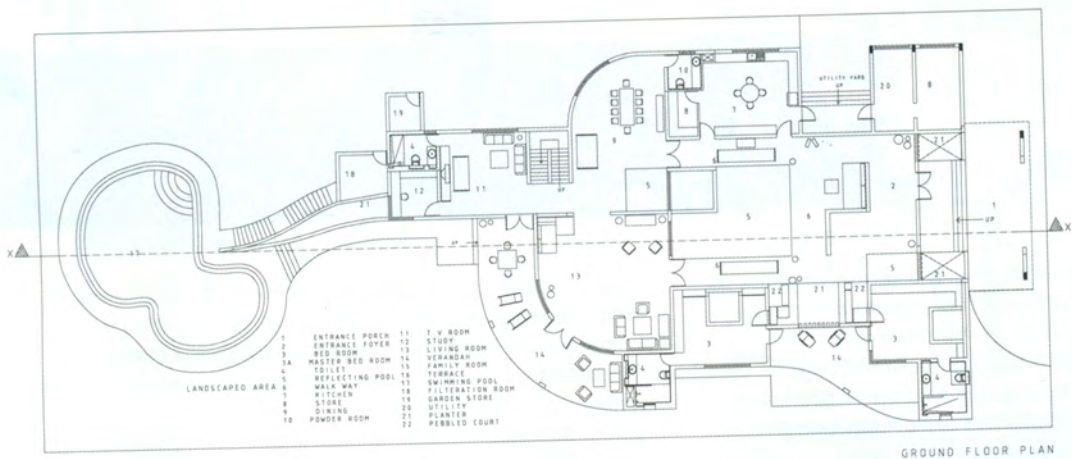


An open-to-sky courtyard with a water body and freestanding walls is the focal point in the house. It also works as a transition area. Spaces flow across large glass windows, voids, and punctures – the ground floor bedrooms open onto the gardens and Annabelle's private terrace descends to the garden below via steps. 'Sloping tiled roofs with large overhangs have been integrated in the design to combat the heavy monsoons and semi-enclosed spaces such as covered tiled walkways, verandas, terraces and open-to-sky spaces are integral to the design,' tells Sandeep.

A fine mix of contemporary and traditional Indian furniture

pieces like *charpai*, Rajasthani tables, boat ends and area rugs give the house its unique character. Annabelle remarks, 'What I believe is that even when everything is modern, a few antique pieces can sit comfortably if the design has the capacity to blend them both.'

Annabelle is the Vice Chairperson of Praxy Fernandes Memorial Trust and Managing Director of Pro-Sports Promotion. She also needs to travel a lot for the constituency work of her brother-in-law Salman Khurshid. She confesses that the house is an oasis of peace and calm when she returns home after a hectic day.





Home truths

Your idea of a perfect weekend... Parties on Saturday nights and lunch with friends on Sundays.

Your favourite pastime... I am involved in so many things that having a productive day is a good day for me.

Creativity to you is... still very much a part of me. I am very good at finding creative solutions in any field.

After spending 30 years in the UK, India is... I really can't compare the fantastic time that I had in London. But then I love the quality time that I get here. People have time for each other. I miss my British Airways Gold Card though – I don't have to do that much international travelling now.

A day in your life... Mornings start with exercise, followed by a swim. Then I go out for meetings, then spend some quiet time at home in the afternoons, followed by social get-togethers in the evenings.

THE FOYER

FACING PAGE The open-spaced foyer flaunts a small pool to its left. The monolithic blocks provide great light and ventilation. Correct placement of the antique mirror has the courtyard in its frame. 'Everyone warned us of these monolithic blocks saying that there would be rodents in the house, but surprisingly we have never encountered any such problem, maybe occasionally a bat flies in,' smiles Annabelle.

The intricate carved elephants were bought from the Sunder Nagar market in Delhi and the mirror was picked up from Sangolda.

DAUGHTER'S BATHROOM

ABOVE Priya's bathroom has been done up in vibrant orange shades and is shared by another bedroom.

DAUGHTER'S BEDROOM

RIGHT All bedrooms on the first floor are spread out ensuring privacy. Priya's bedroom reflects a very girlish tone through its touches of pink colour. The room makes a modest statement with its shelves and wardrobes in laminate.

The bed and wardrobe were custom made to Sandeep's designs by Smith Interiors.





BATHROOM

LEFT Annabelle's bathroom is a great combination of marble, clay and Dholpur stone. The seating area near the shower gives you views beyond the paddy fields.

BEDROOM

BELOW The bedroom looks out on the courtyard below, the other rooms across and the south and south west views of the paddy fields. Sandeep gifted the silver lotus to Annabelle on her house warming party. 'Sandeep was so involved with the placement of all the interior pieces and furniture in the house that when he gifted us this lotus, it had a chit inside saying where it needed to be placed,' laughs Annabelle.

Khosla Associates custom designed the bed for Annabelle and it was made at Smith Interiors. The candle stands were picked up from Moradabad.





DINING

Curved toughened glass frames the dining room with yellow Jaisalmer stone flooring. All the paintings in the house are by young Indian artists. 'The builder did the glass circular wall almost five times to get it right,' recalls Annabelle.

The furniture was custom designed by Khosla Associates and made at Smith Interiors. The mirror is from Casa Paradox.

Not surprisingly, the verandahs are her much-loved part of the house. 'The indoors and the outdoors just meld and it is such a lovely feeling, especially so, given the city's lovely weather.' A melange of materials and vivid colours fill the house with a vibrancy which sits elegantly juxtaposed with the staid, sombre and solidly rooted architecture.

The Manwaring house was shot for a TV show in Hongkong as one of the six best houses in Asia. It was

the only house picked from India. 'I love the house,' admits Annabelle, 'and wouldn't like to change a single thing about it. After eight years, I had to repaint the house and do the upholstery recently; but I was so attached to the original house that I stuck to my original colours!'

With a sigh she concludes, 'This house is like an island after a heavy day of work. It's very livable, eternal and timeless.'



KITCHEN

The red tile splash back gives a punch of colour to the white kitchen. The brushed stainless steel drawer handles add dignity. The white soup tureen was bought at a shop in London.

DARE TO HAVE FUN

By placing a foosball table in the living room, Annabelle injected fun and unexpected playfulness into a formal space. Ice breaker and conversation starter!



LEVEL PLAY

Do away with banisters and frame your staircase with a wall levelled at different heights. Creates visual interest and provides display space too.



IDEAS TO STEAL
from Annabelle's house



SOLO SHOW

One strong statement piece is all you need to dial up the style quotient of a bland space. Support it with an art work and watch them share the spotlight.



BELOW FROM LEFT Uzbek **kilim** (10.5ftx5.6ft; approx 100 years); Afghan maimani **kilim** (15.6ftx5ft; approx 70 years); price on request, The Carpet Cellar.



For stockist details, see page 146